

## EXPLODED DIAGRAM: ACH-16

### WARNING

This diagram is for your reference only. Do not attempt to service or repair the Tool.

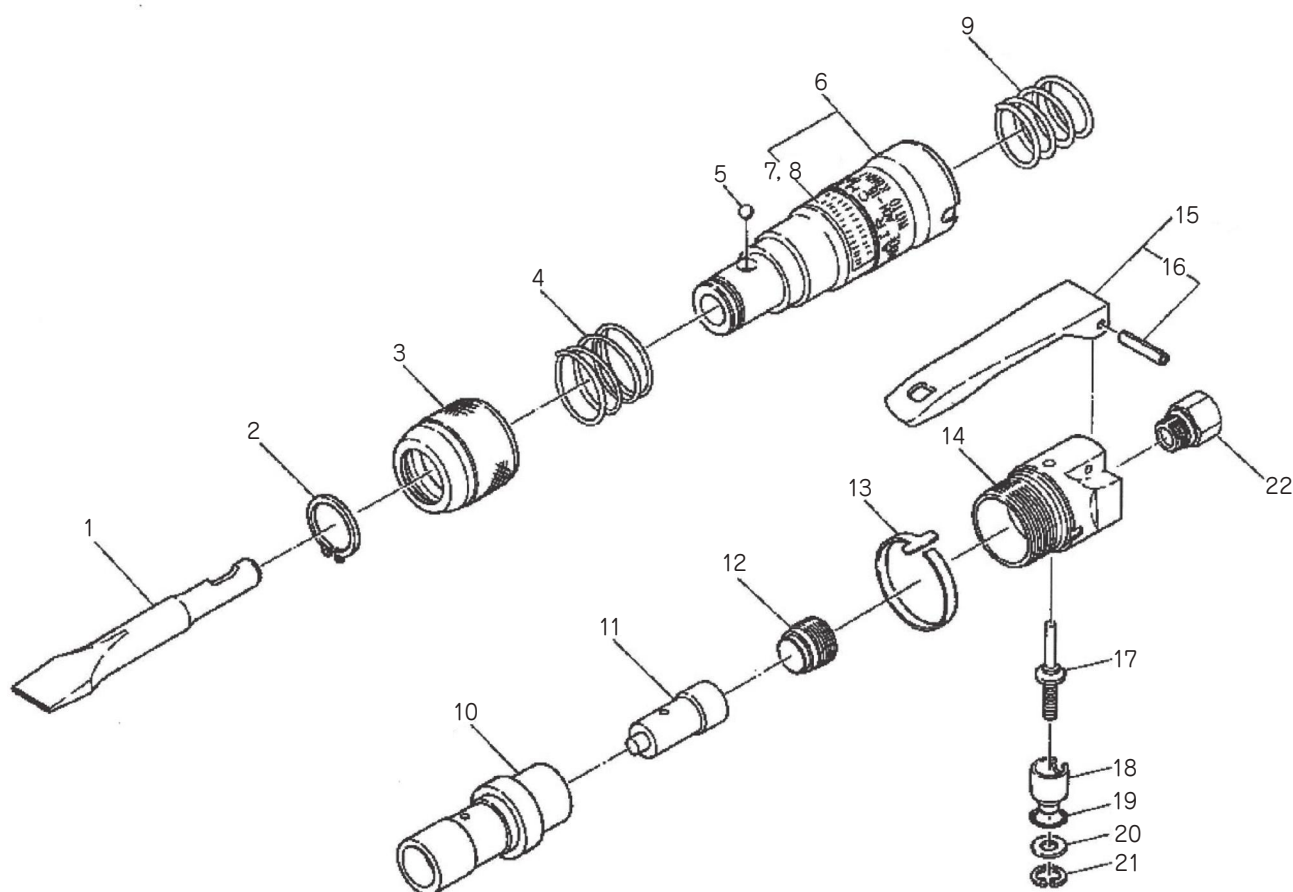
Do not take the Tool apart. Contact an authorized Nitto dealer for all service and repair of the Tool.

Improper service and repair can cause accidents and severe injuries.

Never attempt to modify the Tool.

Never attempt service or repair the Tool yourself.

Exploded view/parts list are subject to change at any time without notice. (As of Jul. 2020)



The part numbers with ( ) are included in the Ass'y parts written above them.

No.	Parts No.	Parts Name	Qty	Price
1	TQ03431	Flat Chisel 20×120	1	
2	TP18406	External Retaining Ring C-22	1	
3	TQ03423	Sleeve	1	
4	TQ03424	Spring 1.6×29.5×25	1	
5	TP06633	Ball 5/16	1	
6	TB02701	Cylinder Sub Ass'y	1set	
7	(TQ12611)	Label Warning CE Mark	1	
8	(TQ12814)	Label Warning	1	
9	TQ03430	Spring 2.9×24.5×29	1	
10	TQ06609	Counter Cylinder	1	
11	TQ03427	Piston	1	
12	TQ06608	End Plate	1	
13	TQ03429	Lock Band	1	
14	TQ03428	Valve Body	1	
15	TB02772	Throttle Lever Ass'y	1set	
16	(TP15780)	Spring Pin 3×24	1	

No.	Parts No.	Parts Name	Qty	Price
17	TA93070	Valve Stem Ass'y	1set	
18	TP06325	Adjust Valve	1	
19	TP11997	O-Ring KS-7	1	
20	TP06327	Spacer 6×12×1.2	1	
21	TP03695	Internal Retaining Ring C-12	1	
22	TQ02349	Bushing M16×Rc3/8	1	

#### Accessories

No.	Parts No.	Parts Name	Qty	Price
	TQ02350	Bushing R3/8×NPT3/8	1	
	TQ03262	Hose Nipple R3/8×3/8	1	
	TQ12815	Instruction Manual	1	
	TQ12816	Declaration of Conformity	1	