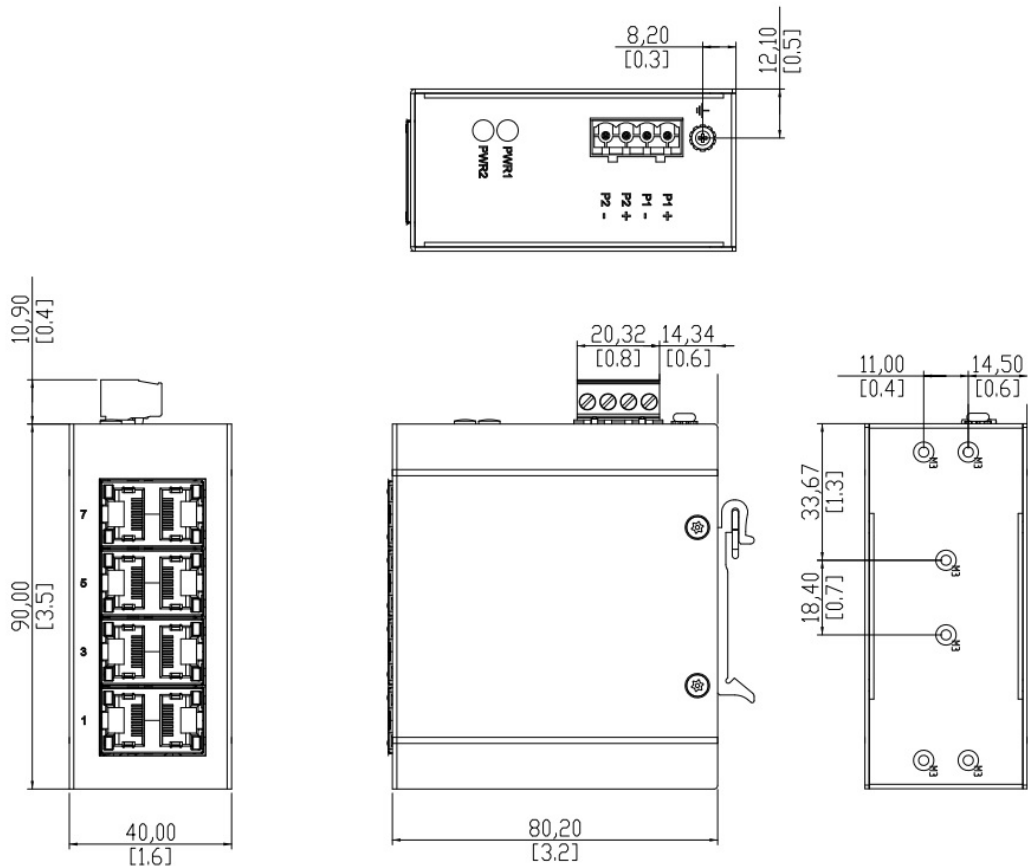


Electrical safety	CE
EMC	FCC Part 15, CISPR 22 (EN55022) Class A IEC-61000-4-2, -3, -4, -5, -6 (Level 3)
RoHS & WEEE	RoHS (Pb free) and WEEE Compliant
MTBF	>25 years

Mechanical

Protection	IP30
Dimension	90mm(H) x 40mm (W) x 70mm (D) (without DIN rail kit)
Weight	265 g
Installation	DIN-Rail mounting

Dimension Diagram



Ordering Information

Available Models	Description	10/100Mb TX	100Mb FX
IS-DF208	Industrial 8 port 10/100 Mb Layer 2 unmanaged Ethernet Switch	8	0

Accessories

1. IS-RK2U 19" rack mount kit
2. IS-RK4U 19" rack mount kit

Package Checklist

- IS-DF208 Switch
- Quick Installation Guide (Printed)
- DIN-Rail kit